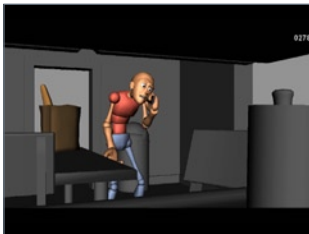


## REEL BREAKDOWN

## CONTACT INFO



### Groceries (:03 to :12)

Responsible for character animation, layout.

Goon rig created by Sean Burgoon.  
Kitchen scene modeled by Jeremy Birn.

Dialogue clip from "The King of Queens".

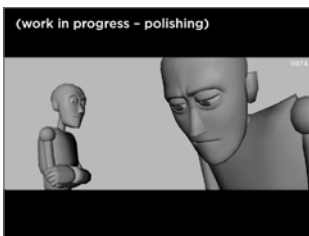


### Toddler (:13 to :17)

Responsible for character animation, layout, lighting & rendering.

Max for Maya rig created by Matt Hunt.  
Background photograph by Doug Connell.

Dialogue clip from Raising Arizona.



### Son (:17 to :29)

Responsible for character animation, layout.

Norman rig created by Morgan Loomis and Leif Jeffers.

Dialogue clip from Searching for Bobby Fischer.



### Bus (:29 to :32)

Responsible for character animation, layout.

B-boy rig created by Rodrigo Ribeiro.

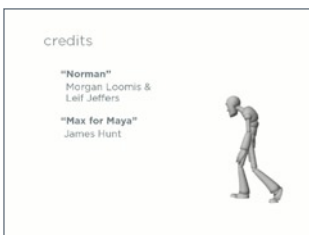
Dialogue clip from "Jones' Storage" (YouTube).



### Switch (FJORG! short film) (:36 to 1:18)

Cooperated on story, layout, and animation with W. Jacob Gardner and Tomas Jech.

Bloke rig created by Jason Baskin.



### Character Walk Cycle (1:18 to 1:29)

Responsible for character animation.

Norman rig created by Morgan Loomis and Leif Jeffers.

Music by Danger Mouse and Jemini.

[jim@jimlevasseur.com](mailto:jim@jimlevasseur.com)

847.899.1926